

# Acoustic Report

powered by Artnovion™ Room Treatment Calculator

Client | **Midiware**

Project Number | Art.td.1330.PA.1.20 B

Date | 21/02/2020

Room Main Function | Rehearsal Room



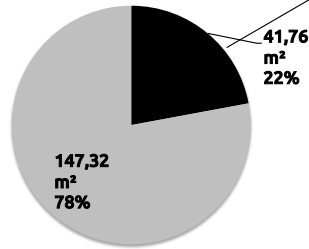
## Room Data with Acoustic Solution

**60%** We propose RT reduction

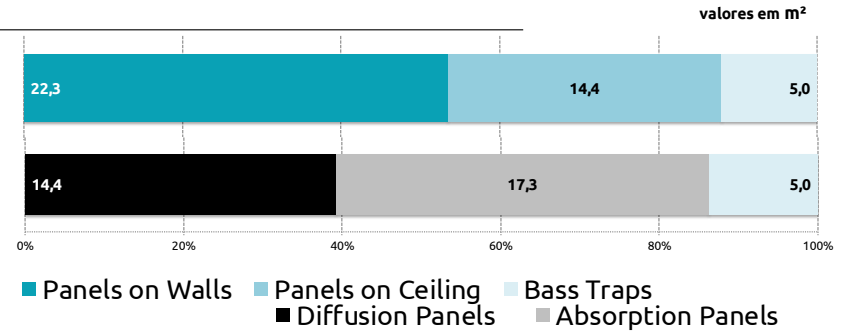
(average according to the following details)

Rt	Low	Mid	High
Before	2,31	2,98	2,54
After	1,21	0,98	0,96
Reduction %	<b>-48%</b>	<b>-67%</b>	<b>-62%</b>

## Acoustic Intervention Area



## Acoustic Treatment Distribution Area



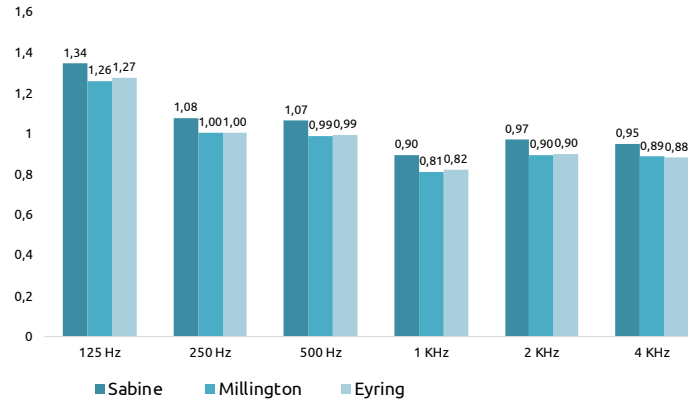
## Acoustic Solution Response

### Sabine After Treatment

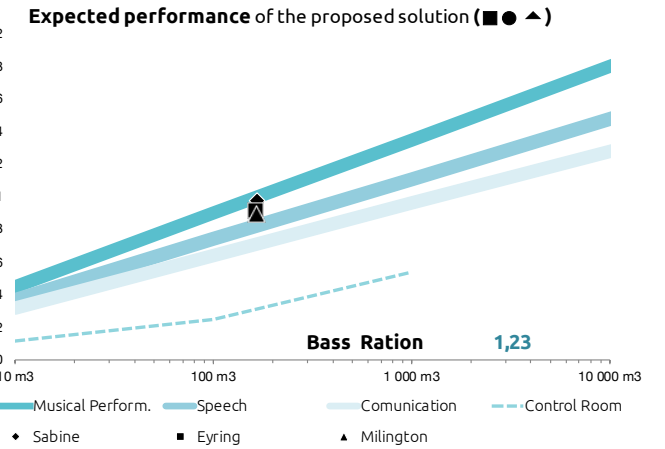
(average)	125 Hz	250 Hz	500 Hz	1 KHz	2 KHz	4 KHz
<b>a W1</b>	0,11	0,15	0,18	0,22	0,17	0,16
<b>a W2</b>	0,18	0,12	0,06	0,05	0,06	0,05
<b>a W3</b>	0,09	0,14	0,17	0,21	0,16	0,16
<b>a W4</b>	0,15	0,17	0,16	0,18	0,14	0,12
<b>a W5</b>	-	-	-	-	-	-
<b>a W6</b>	-	-	-	-	-	-
<b>a W7</b>	-	-	-	-	-	-
<b>a floor</b>	0,09	0,09	0,09	0,09	0,10	0,10
<b>a ceiling</b>	0,05	0,13	0,16	0,21	0,23	0,24

(average absorption per surface)

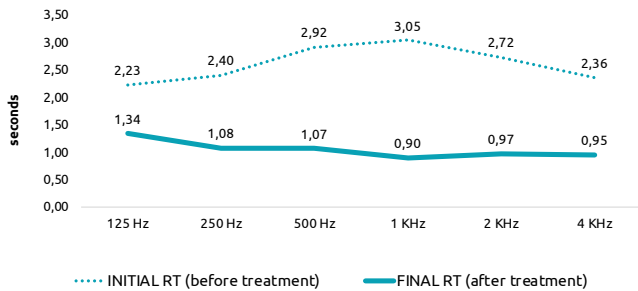
### RT After Treatment



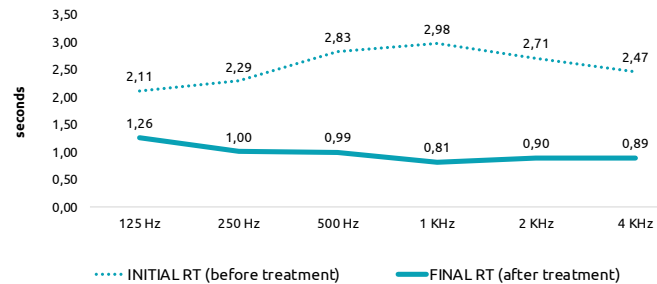
### Targeted RTs for different types of usage



### Compared Analysis - Sabine



### Compared Analysis - Millington



### Compared Analysis - Eyring

